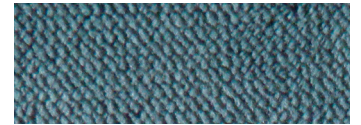


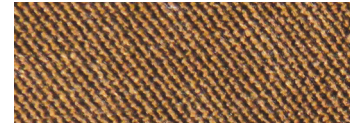


Shown in Coffee Bean*

Standard Fabrics:



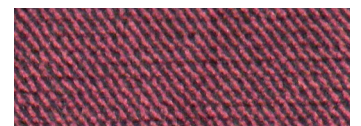
Calypso



Copper



Hazelnut



Shiraz



Sterling

This fabric stands out for its comfort, smooth texture, and rich color options. It features our exclusive SofTouch™ with Stain Defense coating.

* An upcharge will apply for all crossover fabrics.

Day Dreamer PR632



Comfort Zone™
by GOLDEN

The DayDreamer™ is a medium sized power lift recliner offering our exclusive PowerPillow™ articulating headrest and power lumbar STANDARD! It features The Cloud™ seating system and our custom bucket seat design. Recline, relax, and adjust your head and back positions with the touch of a button.

Standard Features:

- Patented MaxiComfort® Positioning
- Adjustable Headrest
- Adjustable Lumbar
- Custom Bucket Seat
- Programmable AutoDrive™ Hand Control
- USB Charging Port
- Extra Pocket

Upgrade Options:

- Deluxe Therapeutic Heat & Massage



MAXICOMFORT® Series PR632

| | |
|--|-------------|
| Model Number | PR632-MED |
| Size | Medium |
| Weight Capacity | 375 Lb. |
| Positioning | MaxiComfort |
| Comfort Zone(s) | 4 |
| Twilight Technology | NO |
| Chaise Seat | YES |
| Pocketed Coil Seat | No |
| Back Type | Seam |
| Removable Back Option | NO |
| Head Rest Cover | NO |
| Arm Rest Covers | NO |
| Overall Width | 38" |
| Overall Height | 45" |
| Width Between Arms | 22.5" |
| Floor to Top of Seat | 20" |
| Seat Depth | 20.5" |
| Seat to Top of Back | 31" |
| Seat to Top of Arm | 6.5" |
| Distance Required from Wall Reclined | 22" |
| Extension reclined from Back of Seat to End of Foot Rest | 44" |
| Life Time Warranty, Chair Frame, Lift Frame, Recline Mechanism | YES |
| Warranty on Electrical Parts | 3 YR |
| Pro Rated Years 4 Thru 7 | YES |
| Warranty on Mechanical Labor | 3 YR |
| Warranty on Electrical Labor | 1 YR |
| Hand Control Routing | Inside Arm |
| Extra Pocket Option | Standard |
| Heat & Massage Option | YES |
| HeatWave Technology Option | NO |
| Articulating Headrest Option | Standard |
| Adjustable Lumbar Option | Standard |
| Foot Rest Extension Option | YES |
| Straight Lift Option | YES |
| USB Charging Port | Control Box |
| Battery Backup | NO |
| Place of Origin | USA |

SmartTek Diagnostic System STANDARD on all Golden models.



Comfort Zone™ by GOLDEN

Comfort Zones 1 - 4 provide an ergonomic comfort experience with an emphasis on head and back support. Each Comfort Zone can be adjusted independently by using the exclusive AutoDrive hand control.



WE PATENTED COMFORT™



Scan with your smartphone camera to learn more about Comfort Zone by Golden.



Phone: 800-624-6374
Fax: 800-628-5165
www.goldentech.com



Literature is current at time of printing. Golden Technologies reserves the right to make changes to the product or literature at any time.

Sizes may vary depending on fabric, filling material, upholstery and carpet thickness. All measurements taken on concrete floor using levels and metal rulers.



Complies with
UL 73 and
CSA C22.2 No. 68



Find us on Facebook
www.facebook.com/goldentechnologies

SHT-PR632-011823